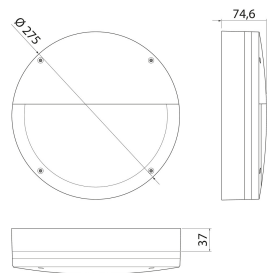
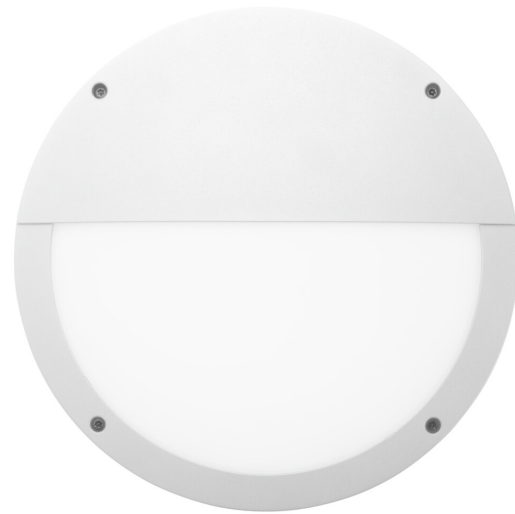




IP65 14W 830/840 PCO WH

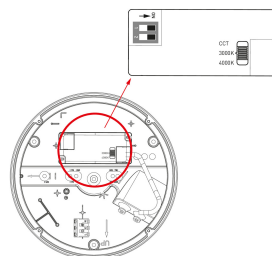
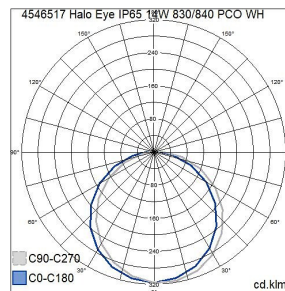
The Halo Eye is an elegant and versatile façade luminaire with an adjustable colour temperature. Made of high-quality, UV-protected materials, the luminaire is designed for applications where high impact resistance is required. Die-cast aluminium housing and polycarbonate diffuser. The luminaire's applications include the outdoor spaces and façades of residential properties. In addition to the colour temperature, the lumen output can be selected; four options are available. Both settings are selected in conjunction with installation. The luminaire is easy to install and offers a polished appearance, thanks to its inconspicuous screw fixtures. As an eye-catching design feature, the luminaire has a ring that provides illumination to the sides and creates an interesting lighting effect on the wall surface, giving your outdoor lighting solution a new and modern look. The Halo Eye's diffuser is equipped with a lid that directs its light downwards.

Halo Eye Outdoors wall/ceiling luminair 7W/8W/12W/14W; 350lm/450lm/650lm/750lm; 3000K/4000K; No dim; IP65; IK10; Protection cl. I; L70B50 75000h; LED not exchangeable; CRI>80; SDCM3; Suitable for through wiring; 3x2.5mm²; Housing al; Colour wh; Cover Plastic, opal



IP65 14W 830/840 PCO WH

PRODUCT CODE	CODE	KG	PRODUCT FAMILY
4546517	A5HAAD	1.48	Halo Eye



Mounting	
Degree of protection (IP)	IP65
Suitable for ceiling mounting	Yes
Luminaire may be covered with thermally insulating material	blank
Luminaire with limited surface temperature, class "D" in acc. with EN 60598-2-24	Yes
Suitable for surface mounting	Yes
Impact strength	IK10
Suitable for built-in mounting	No
Suitable for emergency lighting	No
Fit for monitor workplace	No
Connection type	Screwless terminal
Suitable for suspended mounting	No
Suitable for light line configuration	No
Number of poles	3
Conductor cross section (mm ²)	2.5
Type of wiring	Suitable for thorough wiring
Max. number of luminaires per miniature circuit breaker C16	119
Max. number of luminaires per miniature circuit breaker B16	115
Suitable for wall mounting	Yes
Quantity of luminaires for MCB C16:	119
Quantity of luminaires for MCB B16:	115

Structure	
With lamp	Yes
Colour housing	White
Material housing	Aluminium
Material cover	Plastic, opal
Lamp type	LED not exchangeable
Suitable for number of lamps	1
Lamp holder	Other
Type of grid	Matt
With air slots	No
Control gear included	Yes
Filament test according to IEC 60695-2-11	850 °C - 30 s
Energy efficiency class of the built-in lamp	A++, A+, A (LED)
Housing surface protection	Powder coating
Emergency power supply integrated	No

Dimming and control	
With movement sensor	No
With light sensor	No
Dimming 0-10 V	No
Dimming 1-10 V	No
Dimming DALI-2	No
Dimming DALI	No
Dimming DMX	No
Dimming potentiometer (integrated)	No
Dimming GPRS	No
Dimming LineSwitch	No
Dimming manufacturer's proprietary system	No
Dimming mains voltage modulation	No
Dimming phase cut-off	No
Dimming phase cut-on	No
Dimming programmable	No
Dimming RF	No
Dimming Sine Wave Reduction	No
Dimming Touch and Dim	No
Dimming Zigbee	No
Dimming with push-button	No
No dimming function	Yes
Dimming depending on control gear	No
Dimming DSI	No
Bluetooth operated	No

Photometric data	
Effective luminous flux (lm)	750
Colour temperature (max) (K)	4000
Colour temperature (min) (K)	3000
Beam angle	Open beam
Colour rendering index CRI	80-89
Light outlet	Direct/indirect
Light sharing	Symmetric
Colour of light (alphanumeric)	White
Colour consistency (McAdam ellipse)	SDCM3
Light distributor	Diffuser lens/optic/panel
Photobiological safety according to EN 62471	RG0
Colour temperature switchable	Discrete positions

Lifetime and capacity	
Rated life time L70/B50 at 25 °C	75000
Rated life time L80/B10 at 25 °C	50000
Rated life time L90/B10 at 25 °C	30000
Rated ambient temperature acc. IEC62722-2-1 (min) (°C)	-30
Rated ambient temperature acc. IEC62722-2-1 (max) (°C)	25

Measurements	
Outer diameter (mm)	275
Length (mm)	275
Width (mm)	275
Height/depth (mm)	75

Electrotechnical data	
Type of control gear	LED operating device current-controlled
Nominal voltage (min) (V)	220
Voltage type	AC
Protection class	I
Suitable for lamp power (min) (W)	14
Nominal current (min) (mA)	150
Maximum system power (W)	14
Nominal voltage (max) (V)	240
Suitable for lamp power (max) (W)	14
Nominal current (max) (mA)	350
Luminaire efficacy (lm/W)	54
Power factor	0.9
Total harmonic distortion	20